

LogiTerm[®] 2.0,

The tool you reach for most often

Since it has been designed and created by translation professionals, you will find LogiTerm to be of real help, even in your most common tasks.



Three tools in one

First and foremost, LogiTerm is a fantastic search tool. It is built around full-text indexing, which means it can handle a very large range of data types: terminology, bitexts and archives—in short, just about every kind of document in which you may wish to search for information.



Powerful searches, meaningful results

LogiTerm pushes the envelope when it comes to the art and science of searching for what you need: it can neutralize plurals, you can adjust the scope of your search, it sorts by relevance, and so forth. The information it retrieves is also displayed in such a way that you quickly zero in on what you can use.



Your terminology your way

With LogiTerm, you keep your terminology records and glossaries in word-processing documents. This open approach, with few restrictions, gives you ample room to design and organize your records as you wish. What is more, this approach considerably enlarges the amount of data you can query.



A valuable, new reference tool: the bitext

A bitext is a translator's dream come true! With LogiTerm, you can quickly create aligned versions of existing translations and then query them whenever you wish, just as you would query your terminology database.



Powerful linguistic functions

With LogiTerm, your terminology records take on added value. LogiTerm uses them to scan documents for terms, converts them into glossaries, and applies them to English texts to be translated.

At long last translators have a software tool with all-round usefulness! Regardless of your work methods, LogiTerm fits in, for it was designed to meet the most basic need of translators and terminologists: the need for information. Unlike other, more "niche-specific" tools, LogiTerm proves useful in all situations. Moreover, you get tangible results with very little effort. While you will find most gains in productivity to be indirect, you will be taking advantage of it every day.

LogiTerm is the computer-assisted translation tool you will actually use!

***Original concept:
Claude Bédard***

***Copyright© 1999-2002
Terminotix Inc.
All rights reserved***

240 Bank Street, Suite 600
Ottawa, Ontario K2P 1X4
Tel.: (613) 233-8465
Fax: (613) 233-3995
E-mail: termino@terminotix.com
Web Site : www.terminotix.com

Three tools in one

First and foremost, LogiTerm is a fantastic search tool. It is built around full-text indexing, which means it can handle a very large range of data types: terminology, bitexts and archives—in short, just about every kind of document in which you may wish to search for information.

Your terminology

You can search not only your own terminology records, but also glossaries of all kinds in text format.

If you don't like what LogiTerm finds for you, you are only a click away from searching Termium® instantly.

Nom du fichier	eng	fra	dom
d:\termino\telecomst\files07.doc	managed Internet access solution	solution d'accès Internet géré	CCOM
d:\termino\telecomst\files06.doc	Internet access provider; Internet service provider; commercial access provider; public access provider; commercial Internet provider	fournisseur d'accès Internet; prestataire de services Internet; prestataire d'accès à Internet; fournisseur d'accès à Internet; fournisseur d'accès Internet	INET TELE CCOM
d:\termino\telecomst\files06.doc	Internet service provider; Internet access provider; ISP; IAP	fournisseur d'accès Internet	CCOM INET TELE CCOM
d:\termino\telecomst\files06.doc	Internet access provider // IAP	fournisseur d'accès Internet // FAI	CCOM TELE
d:\termino\telecomst\files06.doc	Internet access	accès Internet	TELE
d:\termino\telecomst\files06.doc	Internet access	accès à Internet	INFO TELE CCOM
d:\termino\telecomst\files06.doc	high-speed Internet access	accès ultra-rapide à Internet	TELE CCOM

Your bitexts

A bitext is a translator's dream come true! With LogiTerm, you can quickly create aligned versions of existing translations and then query them whenever you wish.

You can also convert translation memories and query them as you would a bitext.

Nom du fichier	eng	fra
d:\01-bitextes\jugements\aidmm_bt.htm	The Tax Review Board rightly disallowed the deduction sought for interest payments, notwithstanding that the form of the taxpayer's transactions created an aura of compliance with the requirements of the interest deduction provision.	C'est donc à bon droit que la Commission de révision de l'impôt a refusé d'accorder la déduction réclamée à l'égard de l'intérêt payé, quoique la forme des opérations du contribuable ait été de nature à créer une apparence de conformité avec les exigences de la disposition prévoyant la déduction au titre d'intérêts.
d:\01-bitextes\jugements\aidmm_bt.htm	11. (1) Notwithstanding paragraphs (a), (b) and (b) of subsection 1 of section 12, the following amounts may be deducted in computing the income of a taxpayer for a taxation year:	11. (1) Par dérogation aux alinéas a), b) et h) du paragraphe 1 de l'article 12, les montants suivants peuvent être déduits dans le calcul du revenu d'un contribuable pour une année d'imposition.
d:\01-bitextes\jugements\aidmm_bt.htm	Notwithstanding the movement away from strict construction of taxation statutes and towards determining the true commercial and practical nature of the taxpayer's transactions, a deduction, such as the interest deduction in s. 20(1)(c)(i) which by its text is made available in limited circumstances, has not suddenly lost all strictures.	Même si on a eu tendance à s'éloigner d'une interprétation stricte des lois fiscales et à tenter de déterminer la véritable nature commerciale et pratique des opérations du contribuable, une déduction telle que la déduction au titre d'intérêts prévue par le sous-al. 20(1)(c)(i), laquelle, de par son texte même, ne peut être réclamée que dans des circonstances bien précises, ne fait pas tout à coup l'objet d'aucune restriction.

Your document archives

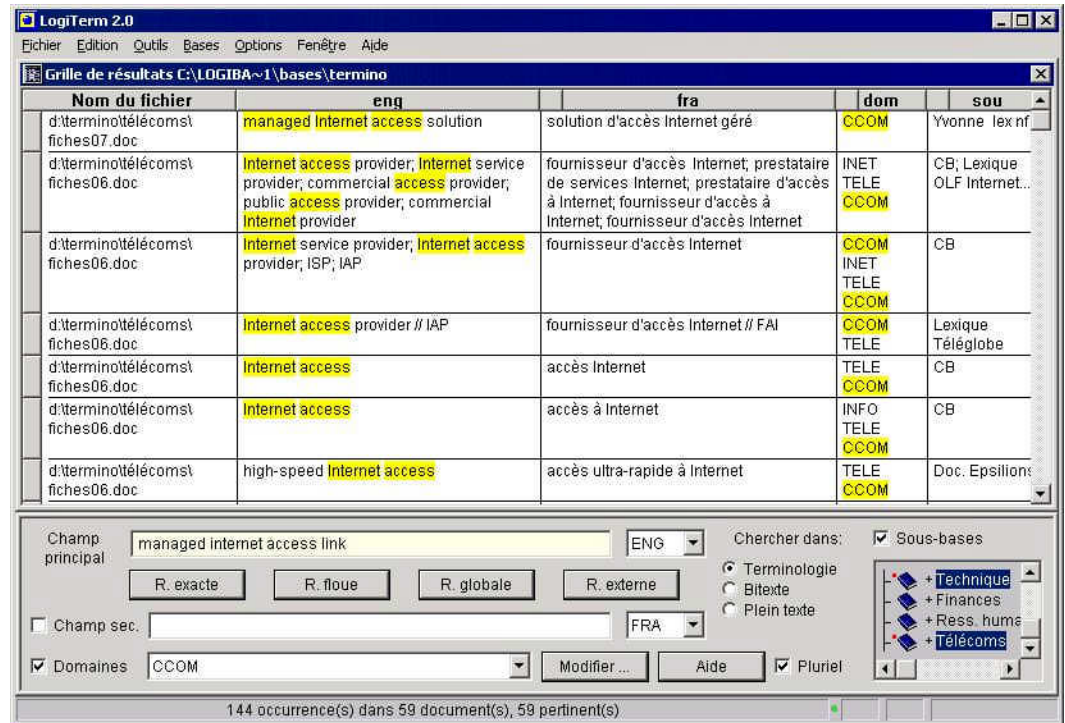
LogiTerm allows you to index huge quantities of textual documents, as and wherever they exist on your hard drive, and then search them, without any prior preparation of data.

As you can for your terminology and bitexts, you can create sub-databases of archives and query them separately.

Rang	Nom du fichier	Date et heure
V 1	d:\courant\textes\idumbarton_en.doc	2000/09/27 05:02:26
2	d:\courant\textes\idumbarton_en.doc	2000/09/27 05:02:26
V 3	d:\courant\textes\istubart_en.doc	2000/09/28 04:18:50
V 4	d:\courant\textes\istubart_en.doc	2000/09/28 04:18:50
V 5	d:\courant\textes\isibronfman_en.doc	2000/09/28 04:08:50
6	d:\courant\textes\isibronfman_en.doc	2000/09/28 04:08:50
V 7	d:\courant\textes\isibronfman_en.doc	2000/09/28 04:08:50
V 8	d:\courant\textes\isibronfma0.doc	2000/09/27 05:02:12
V 9	d:\courant\textes\isibronfma0.doc	2000/09/27 05:02:12
V 10	d:\courant\textes\isibronfma0.doc	2000/09/27 05:02:12
V 11	d:\courant\textes\idumbarton_en.doc	2000/09/27 05:02:26
12	d:\courant\textes\istubart_en.doc	2000/09/28 04:18:50
13	d:\courant\textes\idumbarton_en.doc	2000/09/27 05:02:26
14	d:\courant\textes\istubart_en.doc	2000/09/28 04:18:50
15	d:\courant\textes\idumbarton_en.doc	2000/09/27 05:02:26
16	d:\courant\textes\istubart_en.doc	2000/09/28 04:18:50
17	d:\courant\textes\idumbarton_en.doc	2000/09/27 05:02:26

Powerful searches, meaningful results

LogiTerm pushes the envelope when it comes to the art and science of searching for what you need, and displays the results in the most useful way possible.



Result grid

You are given a bird's-eye view of search results, in such a way that you quickly zero in on what you can use.

This advantage is especially evident when you query your terminology records. As can be seen in the above graphic:

- Several records are displayed simultaneously.
- For each record, several fields are visible.
- The layout allows you to scan for what you can use without having to bother with seeing the entire terminology record.

Highlights to guide you

Every word that matches what you typed in your search query is highlighted. With a single glance you can assess the relevance of the information retrieved.

No more Boolean operators

If an exact match of your search term does not exist, LogiTerm frees you from having to use NEXT, AND, OR, and other operators to find close matches.

LogiTerm automatically takes care of using the operators like NEAR, AND, OR, etc., and presents what it finds in decreasing order of interest, beginning with records that best match your search term.

Simply put, you no longer have to compose your search term many times using various combinations of operators just to find something useful.

Use of neutral word forms

LogiTerm uses a variety of mechanisms to neutralize your search term, such that it can retrieve records that do not contain exactly what you typed.

- Queries in LogiTerm are not case sensitive, unless you indicate otherwise.
- The final "s" of words is dropped, unless you indicate otherwise.
- LogiTerm disregards non-alphanumeric characters, such as hyphens.
- Variant English spellings (*center/centre, colour/color, etc.*) are neutralized.

For example, a search for *Labor-Intensive Project* would retrieve *labor-intensive project, labour intensive project, labour intensive projects, etc.*

Multiple search criteria

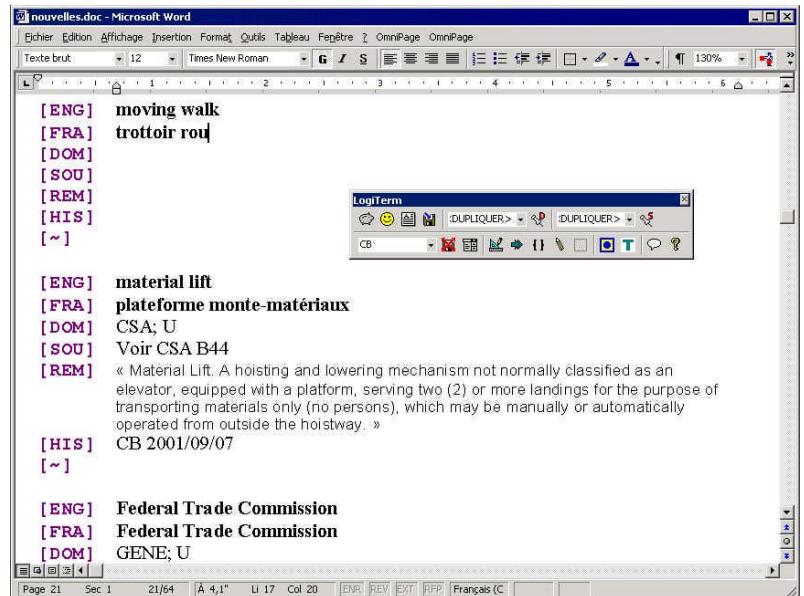
LogiTerm provides many ways to tighten or relax search criteria. You can do this at any time and immediately, in a very straightforward manner.

- You can launch a search and limit it to a single field or search the entire record.
- You can restrict searches to one or more domains.
- You can subdivide your information into "sub-databases," then restrict a search to one or more of them.
- It is worth noting that it is very easy to progress from a restricted search to a general one, and vice versa.

Your terminology your way

With LogiTerm, you keep your terminology records and glossaries in word-processing documents.

This open approach, with few restrictions, gives you ample room to design and organize your records as you wish.



A flexible, open approach

With LogiTerm, you create your terminology records in Microsoft Word, using LogiTerm's own toolbar which simplifies several tasks, especially in the record creation process:

- A single click inserts a blank template.
- You fill in the fields, adding text from drop-down lists where applicable.
- When you save the record, your initials and the current date are added automatically. Each record thus has consistent formatting.

No “black box”

With LogiTerm you no longer have to work with the “black box” of a traditional database: no complicated functions to learn, no risk of data corruption or loss, and no perilous importing of data. LogiTerm uses your terminology files as they are, without changing them, for creating its search indices.

You will find that creating and managing your terminology records with a word-processing package is an approach that breaks away from having to use traditional database management software and proves advantageous in several regards:

- Minimal training is required, for word processing packages are the tools that translators and terminologists generally know best.
- You can see all the data and edit it freely in a word-processing document. You don't have to fear losing records or corrupting a database.
- When creating and editing terminology records, you can use all the features of your word processing package, including any macros you make.
- You can type as much as you like in every field in a terminology record. You can even include graphics.

- You can group your terminology records as you see fit in separate, easily identifiable files (e.g., by client, job, project, etc.). In other words, the organization of your terminology records resembles how you organize your work, and you no longer have to use a traditional monolithic database.
- It's easy to swap files of terminology records with colleagues, mark annotations in colour, add comments, etc.

Secondary terminology sources

One of LogiTerm's key strengths is that it enables you to consult terminology records not created by you: glossaries from a variety of sources, terminology records exported from a client database, and so forth.

While some of these records may be irrelevant to your needs, of questionable reliability, or simply duplicates of what you already have, they can prove very useful and round out your own terminology records.

With LogiTerm, you can now search this data easily alongside your own without any risk. Integrating secondary terminology data will not dilute or degrade your vital data:

- first, because LogiTerm easily lets you indicate if it is to be included in your search;
- second, because it is easy to “undo” the integration and remove the secondary data simply by dropping it from the list of files and folders in your terminology database.

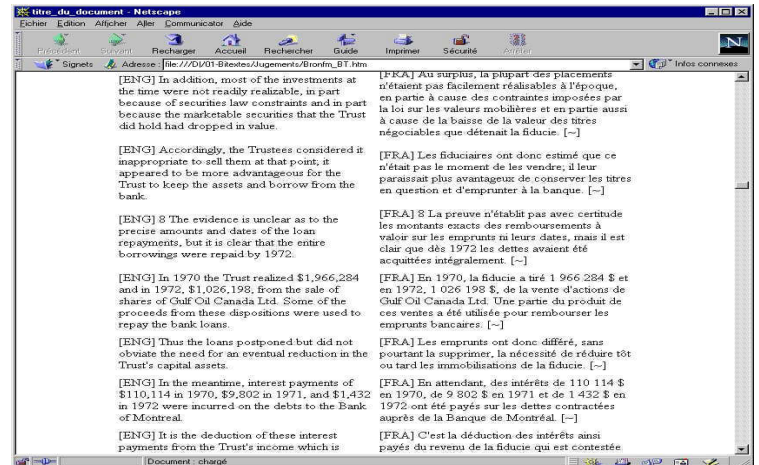
When you first receive these secondary terminology files, you can exploit them as you would any other text file, with no special preparation. While data from them will not be displayed directly in the result grid, you can still consult it in another window.

Once you establish that this data is useful to you, you can convert it to LogiTerm format at your leisure.

A valuable, new reference tool: the bitext

A bitext is a translator's dream come true!

With LogiTerm, you can quickly create aligned versions of existing translations...

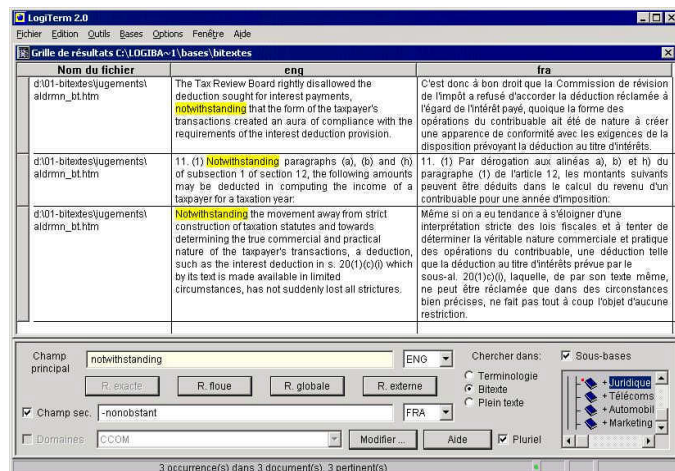


What is a bitext?

A bitext is a merged document comprised of both source- and target-language versions of a given text. Translators and terminologists will see the value and numerous advantages of this tool immediately:

- A bitext constitutes a sort of open-ended or full-text “glossary” which, by its very nature, contains countless “terminology records” that you have not yet had the time to formalize. A bitext therefore provides a valuable complement to your more formal terminology records.
- They also provide you with valuable translation solutions in context, allow you to observe terminological or stylistic usage for a given client, track down stereotyped turns of phrases, etc.
- For beginning translators, bitexts can represent a powerful training and guidance tool.
- A bitext created by LogiTerm lends itself to bilingual writing, quality control, and revision of translations.

As is the case for your terminology records, your bitexts are not pooled in a monolithic database. Each file resembles an HTML file which you can easily share with colleagues for reference purposes.



A powerful alignment tool

LogiTerm's bitext tool is easy to use and can handle unformatted text, Word and WordPerfect files with no prior conversion.

Created by RALI at the Université de Montréal, the bitext tool (or alignment tool) used by LogiTerm automatically matches, sentence by sentence, the original and translated versions of a given text.

Its thoroughness and reliability are such that you do not have to check the output, which could otherwise be an unwieldy, tedious task. In other words, you always have time to create a bitext!

Compatible with translation memories

You can augment your bitext database by indexing exported versions of translation memories. LogiTerm comes with a conversion tool that can convert the most common translation memory formats to LogiTerm's bitext.

Inversely, you can also take one or more bitexts and create documents that can be imported into a translation memory.

... and then query them whenever

you wish, just as you would query

your terminology database.

Powerful linguistic functions

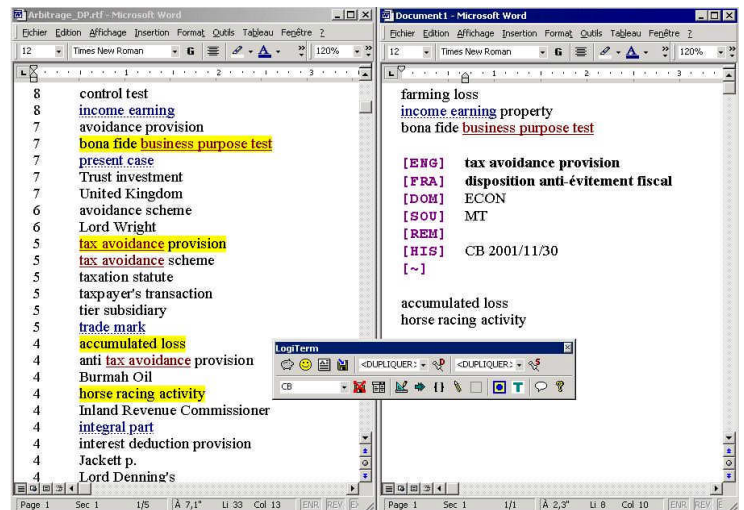
With LogiTerm, your terminological data takes on added value. LogiTerm uses it to scan documents for terms, converts it into glossaries, and applies it to the English texts to be translated.

Scan for terms

LogiTerm scans the texts to be translated for potential terms and highlights in colour the terms or portions of terms that you already have in a formalized terminology record.

You can then take the list of scanned terms and quickly create terminology records the way you want them using your word processing software and LogiTerm's toolbar (shown in graphic).

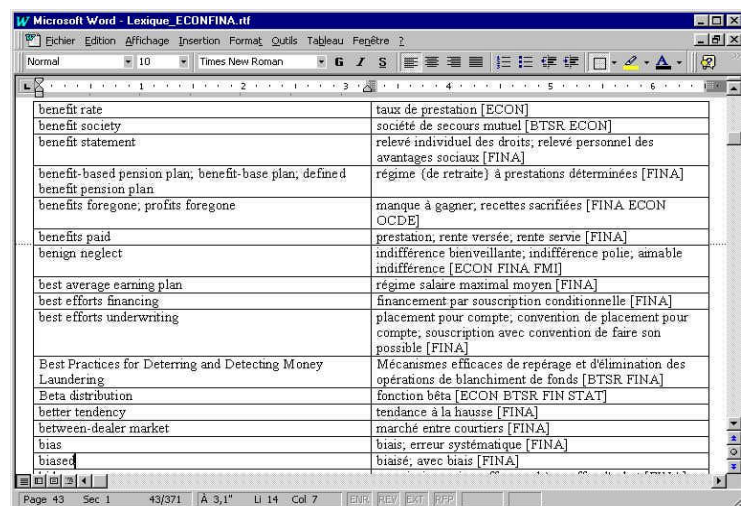
LogiTerm can also compile an aggregate list of terms using an exclusive feature that accumulates indefinitely the terms it scans for you, for as many documents as you like. LogiTerm can thus act as a "terminology watcher" that tells you which terms are used most frequently overall in the documents you are processing.



Creating glossaries

LogiTerm allows you to produce glossaries containing all your records for a specified domain.

You can also prepare a glossary that contains only the vocabulary useful for a text or group of texts to be translated (corporate version only). This feature is very handy if you want to provide a subcontractor with a list of terminology to be used.



Pretranslation

LogiTerm can use your terminology to pretranslate the texts you have to translate.

When pretranslating, LogiTerm can take into account the use of plurals, hyphens, capitalization and common English spelling variations.

LogiTerm selects the translation equivalents based on an order of priority that you specify.

Also, to be on the cautious side, LogiTerm does not translate single-word terms because of their likely polysemy, but simply highlights them in blue. Even so, there is an option whereby you can specify that single-word terms must be translated.

